



PowerSuite Quick Start Guide

PowerSuite is the complete performance solution for your PC. Merging RegistryBooster, DriverScanner and SpeedUpMyPC under a single scan interface, PowerSuite boosts and protects vulnerable but critical system elements tied to speed and stability.

Downloading and installing PowerSuite

It usually takes less than a minute to download and install PowerSuite.

- Shortly after purchasing PowerSuite, you will receive an email with your order details, a link to download your product and a serial number for activation.
- To download PowerSuite, click on the download link and, if prompted, select **Save** and then choose a download location where to save your file. The next step is to locate the .exe file and double click on its icon to start the installation wizard.
- Follow the Wizard to finalize the installation process. You will be prompted to enter your serial number to activate your product. This can be found in the order details email that was sent to you shortly after purchasing the product. This number should start with the letters PS and be in the following format, where X represents a character: PS-XXXXX-XXXXX-XXXXX-XXXXX-XXXXX.

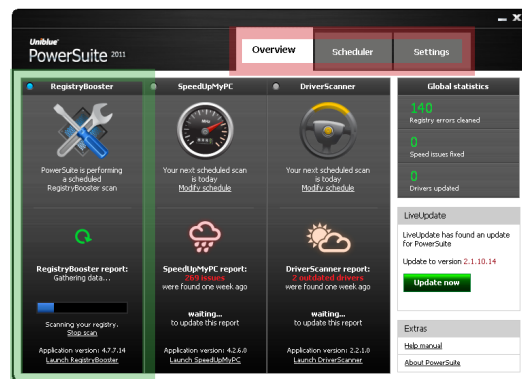


Figure 1

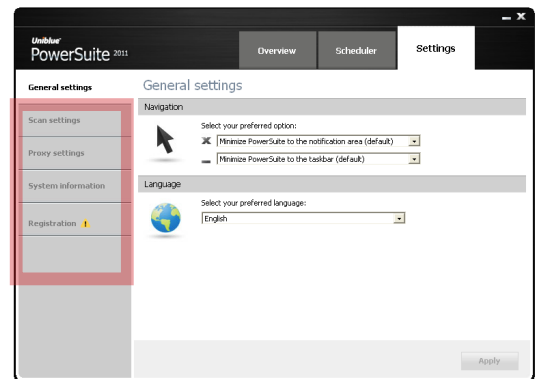


Figure 2

Interface overview

1. PowerSuite merges RegistryBooster, SpeedUpMyPC and DriverScanner under a single scan interface. Figure 1 shows the RegistryBooster panel boxed in green.
2. Use the Navigation Panel (figure1, boxed in red) to shift through the different pages of the application.
3. Figure 2 shows the PowerSuite Settings screen. The menu on the left hand side offers different screens within the chosen tab.

Scanning and fixing

PowerSuite offers three scans that target different areas tied to your PC's performance and stability:

- The registry scan scans your registry for errors.
- The speed scan scans system and resource allocation settings for issues slowing down your computer.
- The driver scan scans your system for outdated drivers.

Upon launching for the first time, PowerSuite will conduct all three scans and display as results the number of registry errors, slow-down issues and outdated drivers affecting the performance of your PC. To view more detailed scan results, you will need to summon the standalone application by clicking on the relevant **Launch Application** button.

The next section deals with the functionality of the standalone applications.



RegistryBooster

RegistryBooster repairs or removes harmful registry entries to optimize your PC for better performance. It also includes a registry defragmentation function to improve your computer's efficiency in executing instructions.

Fixing registry errors

After scanning through PowerSuite, click on the **Launch application** button associated with RegistryBooster and the application will launch directly on the **Latest Scan** results from within the **Registry Scan** tab. Click on the **Fix errors** button to start the registry cleaning process. Before cleaning, RegistryBooster will automatically backup your registry as a precaution.

Defragmenting your registry

Registry defragmentation can improve system performance by reordering instructions scattered in different locations. To defragment your registry, click on the **Registry Scan** tab. From the left hand side menu, select **Registry defrag** and then click on the **Defrag registry** button at the bottom right of your screen.

Note that the defragmentation may take a few minutes. Do not quit RegistryBooster during defragmentation as this may harm your system.

Restoring the registry

To restore a backup copy of your registry, access the **Restore** tab from the navigation panel. The last registry backups will be listed one beneath the other, most recent first. Select the backup version you want to resort to then click the **Restore** button at the bottom right of the screen. Registry changes will be implemented upon restarting your computer.



DriverScanner

DriverScanner scans your computer to provide a list of drivers that need to be updated. With single click convenience, DriverScanner will then install each driver update on your PC.

Downloading new drivers

To update a driver, DriverScanner must be guided through a three part process:

1. System scan
2. Driver download
3. Driver installation

After scanning through PowerSuite, click on the DriverScanner **Launch Application** button and the program will launch straight in the Scan results page within the Driver scan tab.

To start the download process, click on the **Download all** button at the bottom right of the screen. During this process, DriverScanner will contact the Uniblue database and download the necessary data. A progress bar will approximate download completion until the words "Download complete" appear with a 'very good' tick. At this stage, drivers will be listed one beneath the other. Clicking on the **Install** button will start a driver's installation process. Note: A single driver can cater for more than one device. For example, DriverScanner may identify five outdated devices but offer only three drivers. This is normal and technically sound.

How to install new drivers

To install a downloaded driver, click on the word **Install** displayed in the middle column of the Update drivers page. Note that drivers need to be installed one by one.

Before clicking, check for the driver's safety rating, displayed to the right of the Install button. System drivers are labelled risky as their installation is particularly delicate. We recommend that you do not install risky drivers unless you are an advanced user taking a considered decision.

Once you click on **Install**, DriverScanner launches an automatic restore point which will allow you to roll back to previous drivers on demand. DriverScanner will then install the new driver automatically and silently. A pop-up will confirm a driver's successful installation.

Ignoring drivers

If you decide not to install a driver for safety reasons, you might want to omit this driver from subsequent scan results. To do this, go to the **Driver Scan** page from the navigation panel. From the left hand side menu, select **Update drivers**. You will find a list of downloaded drivers. To omit a driver from the next search results, click on the **Ignore** option from the right hand side.

Ignored drivers can be retrieved. To ignore a driver, select the **Manage** tab from the navigation panel and then **Ignored drivers** from the left hand side menu. Select the appropriate driver by clicking the tickbox on the left hand side. An **Unignore selected** button should turn blue. Click on the **Unignore selected** button and the driver will be offered once again in subsequent scan results.

Rolling back to a previous driver

Every time you install a new driver DriverScanner keeps a restore point. This is a snapshot of your system that you can resort to in case of system problems.

To roll back to a restore point, click on the **Manage** tab from the navigation panel. Select **Restore** from the left hand side menu. Any restore points will be listed together with the date and time that they were set. To rollback to your computer at a previous state, select the appropriate restore point by clicking on the left hand side tickbox. Click on the **Restore selected** button. To complete the rollback you will need to restart your computer.

Note: Rolling back to a restore point will undo any changes made to your computer since the restore point was set.



SpeedUpMyPC

SpeedUpMyPC identifies issues slowing down your computer and re-tunes your system for speed.

Scanning for issues slowing down your PC

After scanning through PowerSuite, click the SpeedUpMyPC **Launch Application** button and the program will launch straight in the Scan results page within the Speed scan tab. By default, if you click on the **Speed up now button**, SpeedUpMyPC will conduct a full system speed up, implementing speed tools and system tweaks as well as cleaning junk files.

Conducting a selective speed up

You can choose to omit certain improvements from the speed up process by deselecting individual improvements from the scan results. To do this, click on the tweak category name, shown in blue and underlined. Improvements will be listed with a checkbox to their left. Simply untick any improvements you would like to omit.

Managing optimizations

Once set, some optimizations can be deactivated or undone. To manage optimizations in this manner, select the **Manage** tab from the navigation panel and choose between **Speed tools** or **System Tweaks** from the left hand side menu. This brings up a list of optimizations together with the option to activate or deactivate.

System optimization explained

SpeedUpMyPC increases your computer's speed through improvements grouped into three categories:

1. Speed tools
2. System tweaks
3. Junk file deletion

What are speed tools?

Speed tools are improvements that remain actively available for deployment as long as SpeedUpMyPC is left running. Each speed tool has a specific purpose.

CPU manager: A process may cause problems by manipulating an unreasonably large chunk of system resources. The CPU manager guards against the possibility of such an event by adjusting the priority of a process before it spirals out of control.

Proactive thumbnail generator: Under some settings, every time you open a picture folder, Windows generates the picture thumbnails that are used for preview. With the Proactive thumbnail generator on, upon folder access, your PC will conduct a one-time thumbnail generation process and save the relevant data to a Windows system folder. From then onwards thumbnails will be quickly retrieved instead of generated.

Start menu software accelerator: The Start menu software accelerator increases launch speed of programs launched from the Start menu by anticipating the user and pre-loading data into the memory.

Software launch booster: When an application is launched, the Launch booster directs extra system resources to reduce its launch time.

What are system tweaks?

System tweaks are one-time changes that take place upon clicking the **Speed up now** button. Although there are many different types of system tweaks, we group them under three categories:

- *System resource tweaks* free up system resources by cutting off unused services or improving system resource allocation.
- *Internet or network tweaks* optimize network and browser settings for better speed and efficiency.
- *Visual effects tweaks* optimize Windows visual effects for speed.

What are junk files?

Junk files accumulate on your computer through use, occupying hard drive space and slowing down your PC. After scanning you can click on the Junk files link to identify which files SpeedUpMyPC has identified as junk files for removal.

Premium support

Our premium support service is provided by dedicated customer care and technical support professionals. For more information visit our support center, which includes a useful [FAQs section](#).